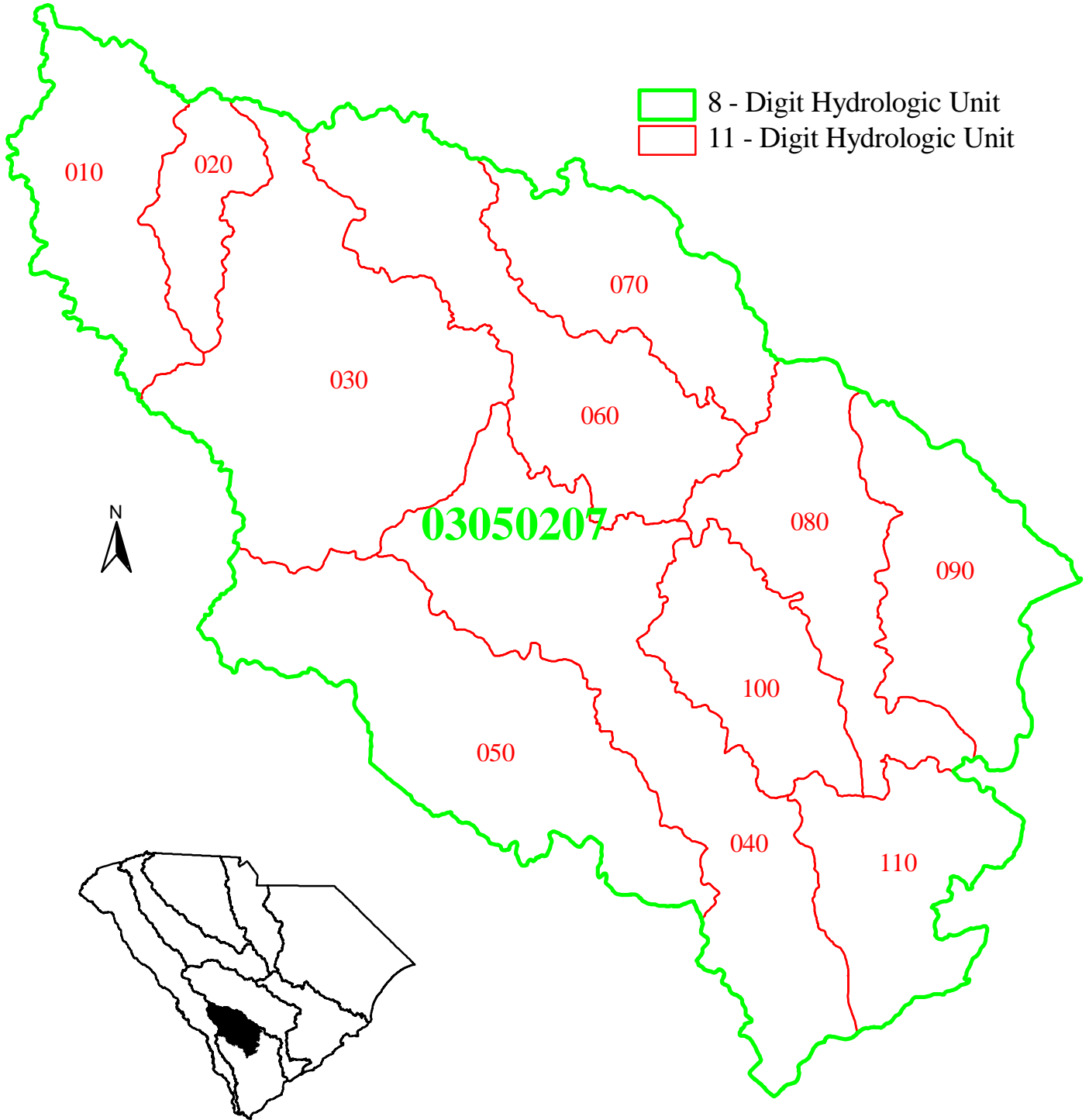


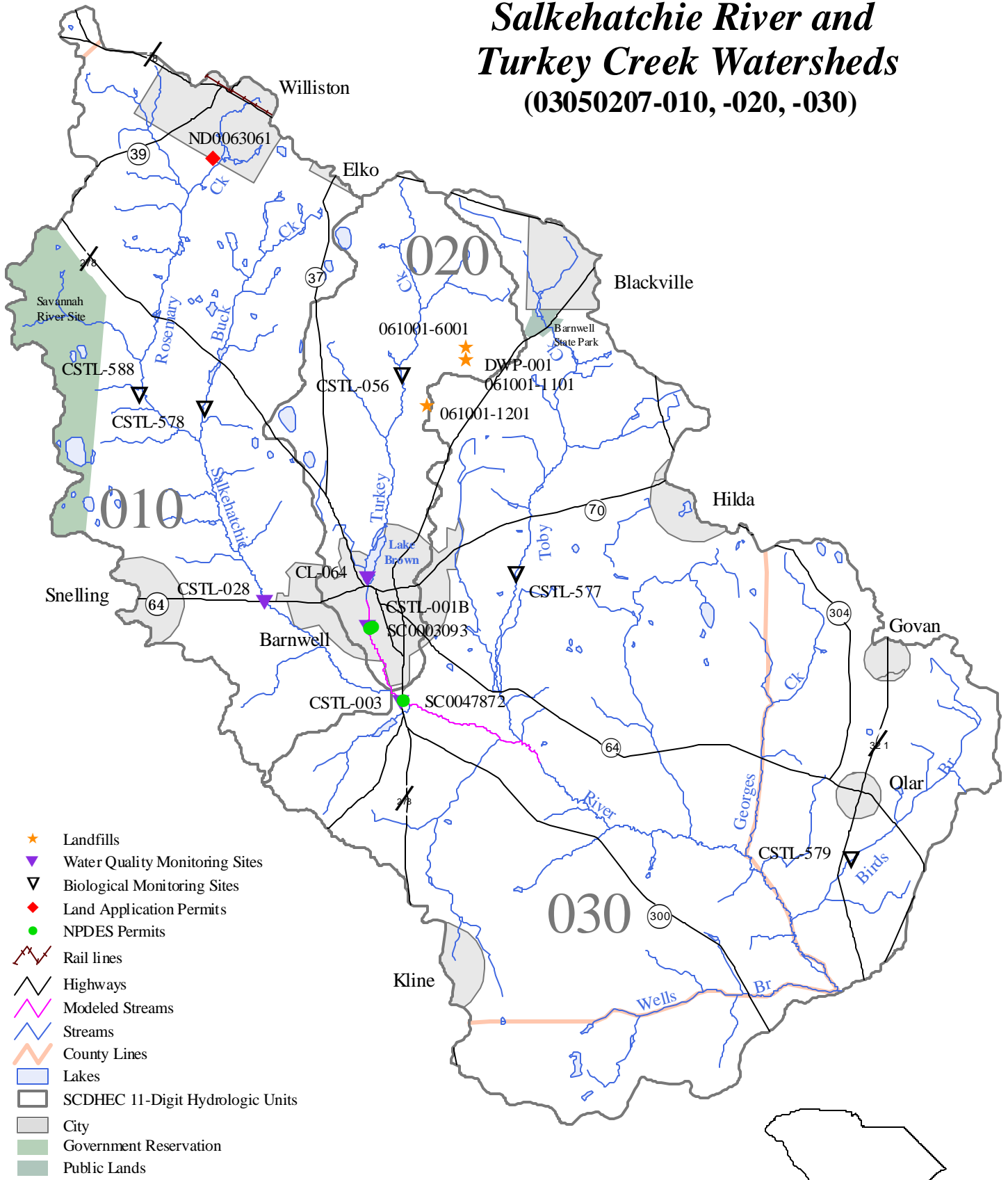
# Salkehatchie River Basin Watershed Unit Index Map



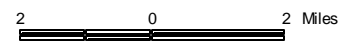
 8 - Digit Hydrologic Unit  
 11 - Digit Hydrologic Unit

5 0 5 10 15 Miles

# Salkehatchie River and Turkey Creek Watersheds (03050207-010, -020, -030)

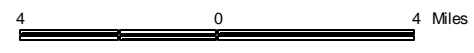
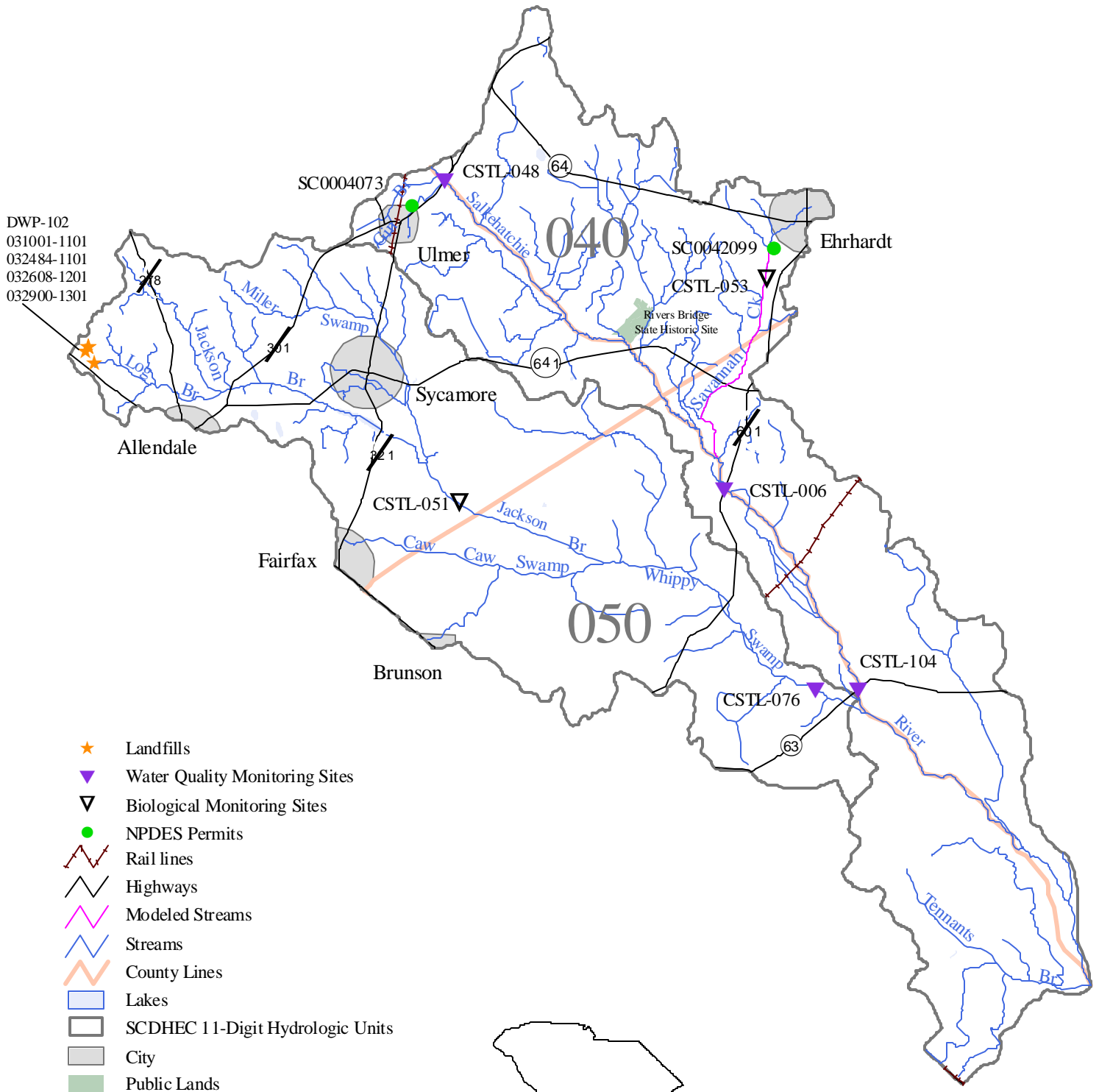


- ★ Landfills
- ▼ Water Quality Monitoring Sites
- ▽ Biological Monitoring Sites
- ◆ Land Application Permits
- NPDES Permits
- Rail lines
- Highways
- Modeled Streams
- Streams
- County Lines
- Lakes
- SCDHEC 11-Digit Hydrologic Units
- City
- Government Reservation
- Public Lands

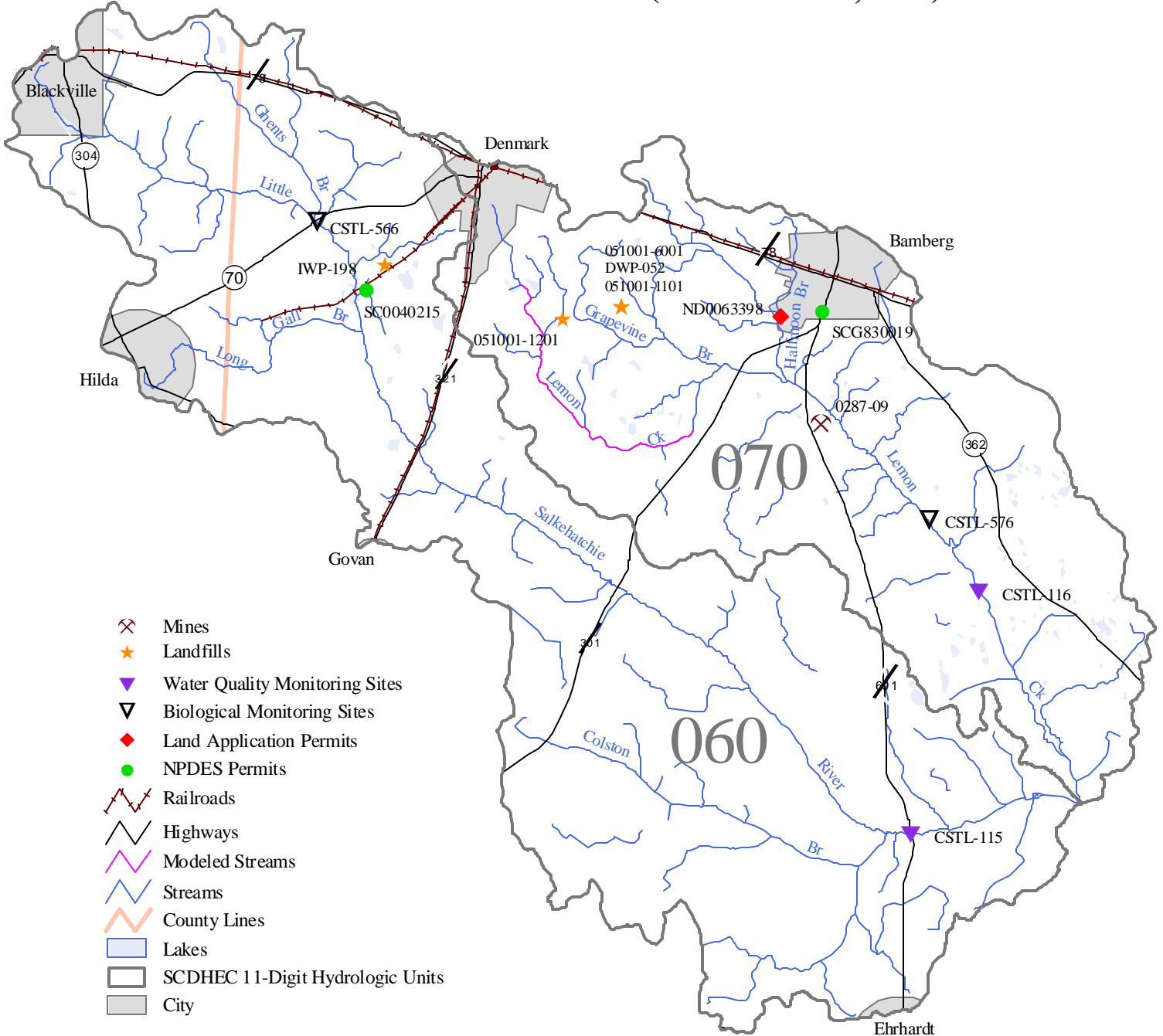


# *Salkehatchie River and Whippy Swamp Watershed*

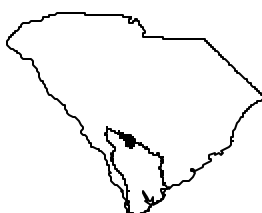
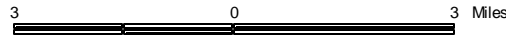
**(03050207-040, -050)**



# Little Salkehatchie River and Lemon Creek Watersheds (03050207-060, -070)

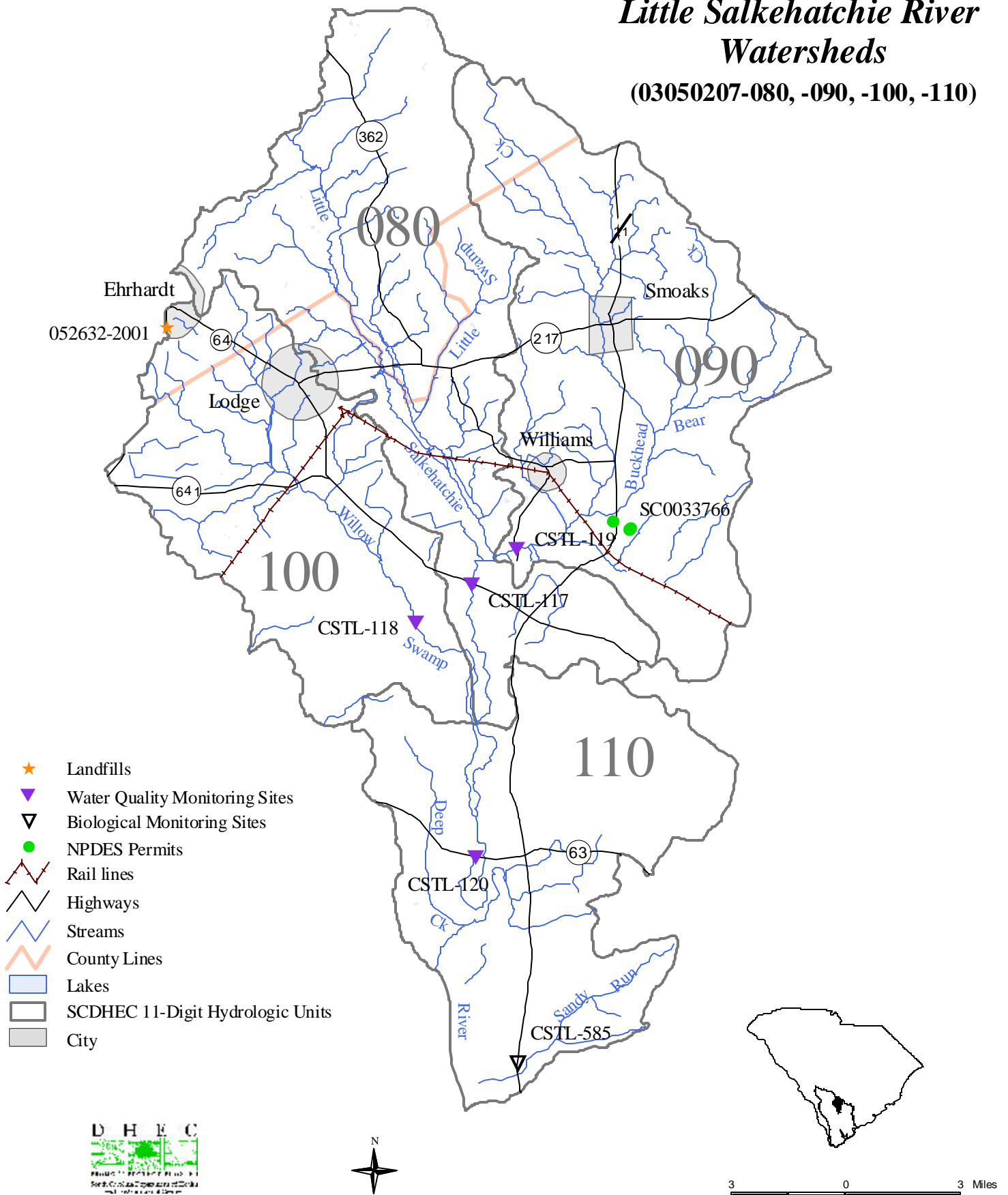


- Mines
- Landfills
- Water Quality Monitoring Sites
- Biological Monitoring Sites
- Land Application Permits
- NPDES Permits
- Railroads
- Highways
- Modeled Streams
- Streams
- County Lines
- Lakes
- SCDHEC 11-Digit Hydrologic Units
- City

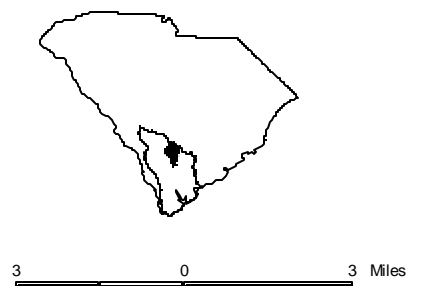


# Buckhead Creek, Willow Swamp, and Little Salkehatchie River Watersheds

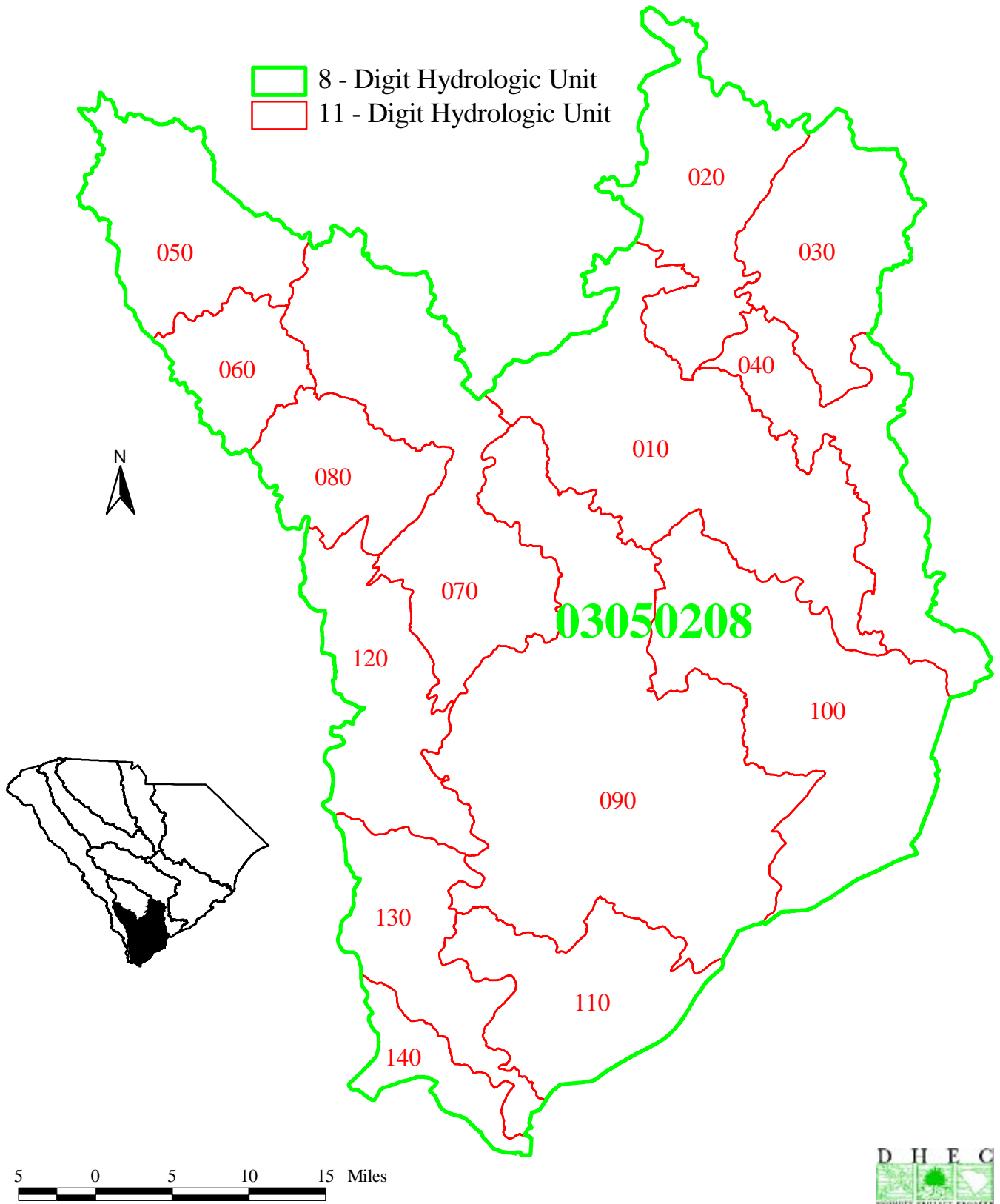
(03050207-080, -090, -100, -110)



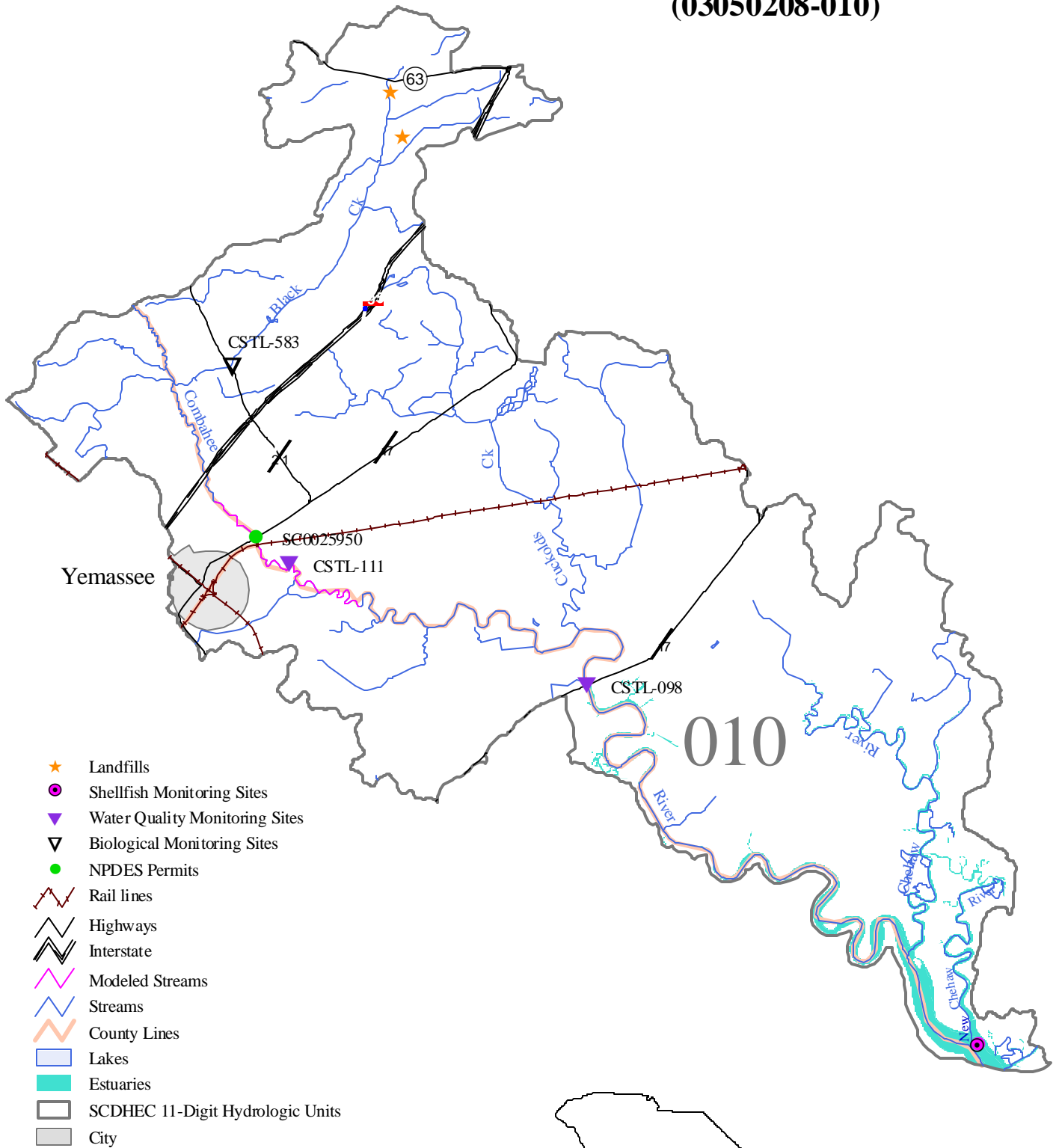
- ★ Landfills
- ▼ Water Quality Monitoring Sites
- ▽ Biological Monitoring Sites
- NPDES Permits
- Rail lines
- Highways
- Streams
- County Lines
- Lakes
- SCDHEC 11-Digit Hydrologic Units
- City



# Combahee/Ashepoo/Broad River Basin Watershed Unit Index Map

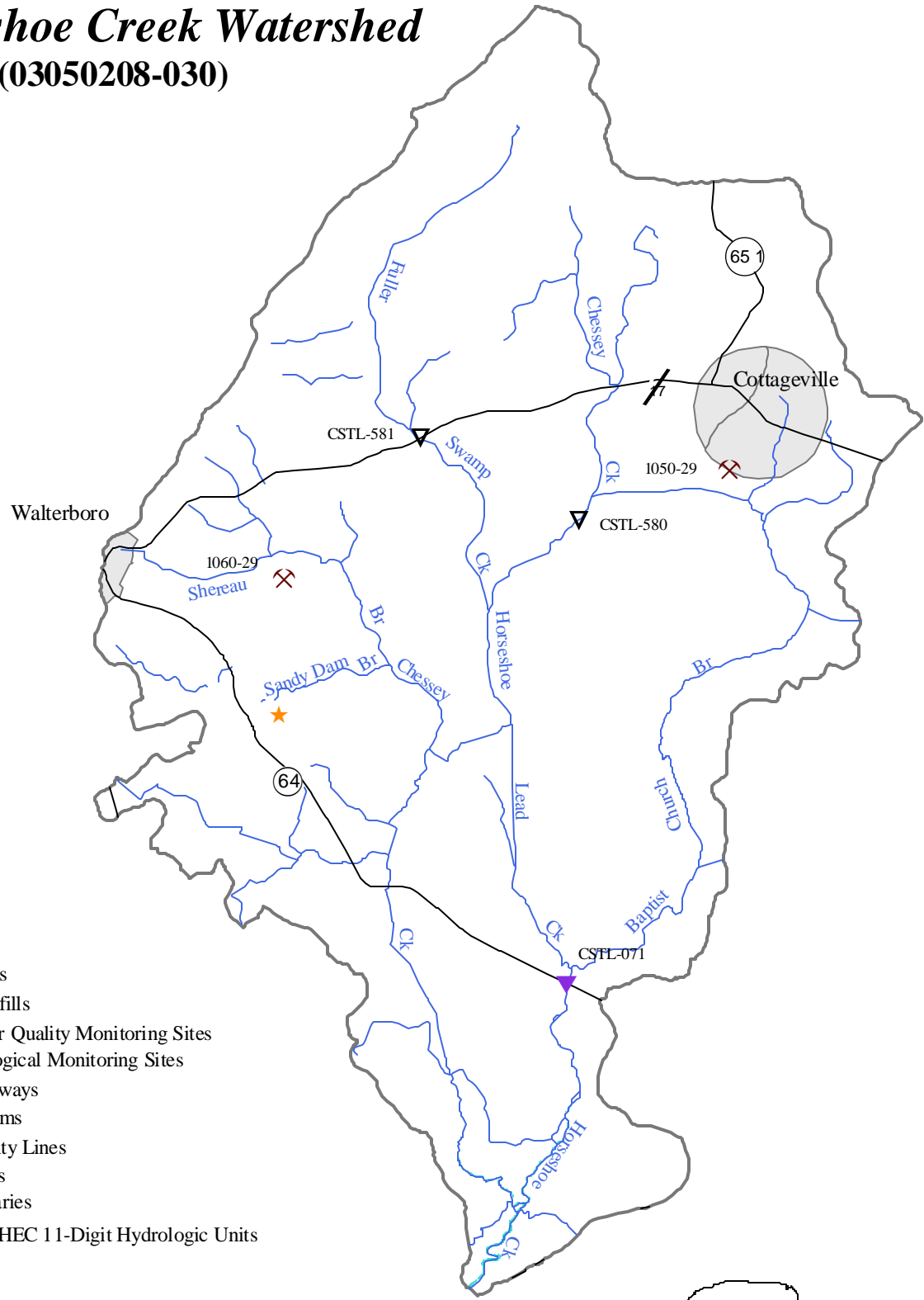


# Combahee River Watershed (03050208-010)

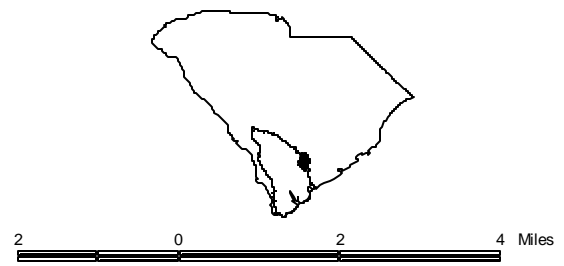




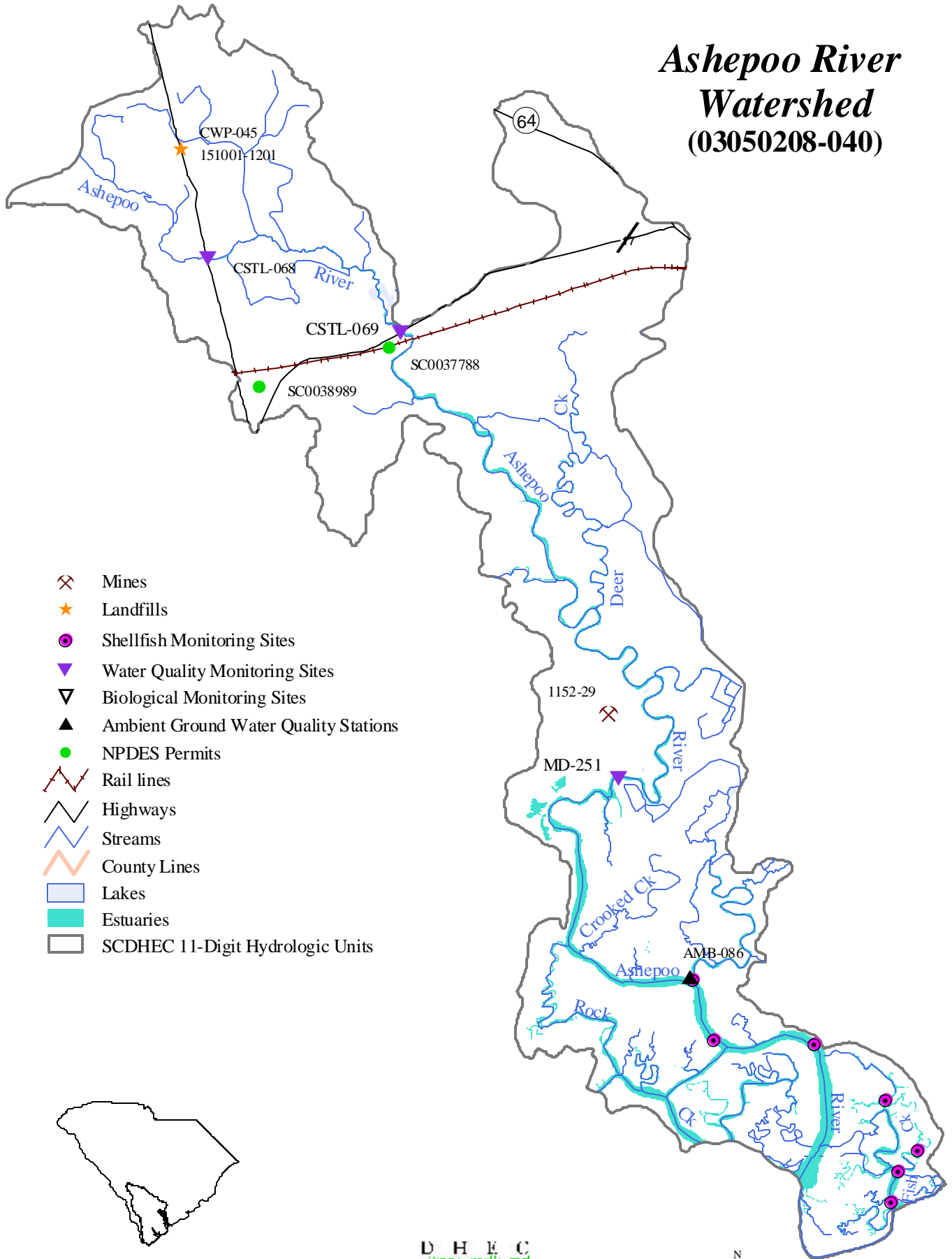
# Horseshoe Creek Watershed (03050208-030)



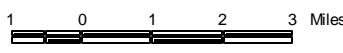
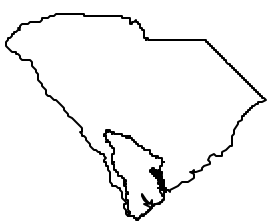
- Mines
- Landfills
- Water Quality Monitoring Sites
- Biological Monitoring Sites
- Highways
- Streams
- County Lines
- Lakes
- Estuaries
- SCDHEC 11-Digit Hydrologic Units
- City



# Ashepoo River Watershed (03050208-040)

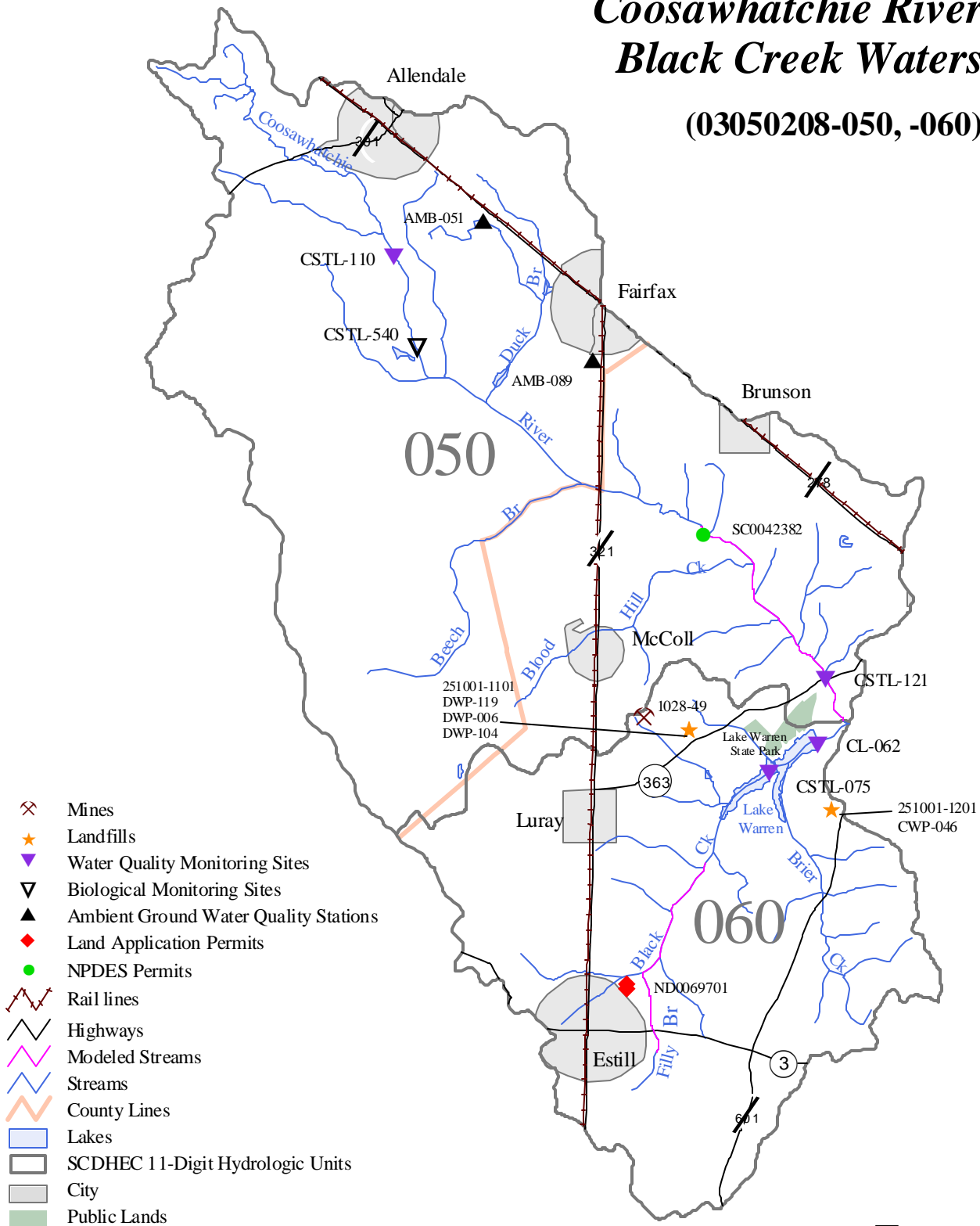


- Mines
- Landfills
- Shellfish Monitoring Sites
- Water Quality Monitoring Sites
- Biological Monitoring Sites
- Ambient Ground Water Quality Stations
- NPDES Permits
- Rail lines
- Highways
- Streams
- County Lines
- Lakes
- Estuaries
- SCDHEC 11-Digit Hydrologic Units

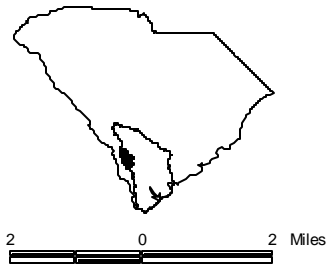


# Coosawhatchie River and Black Creek Watershed

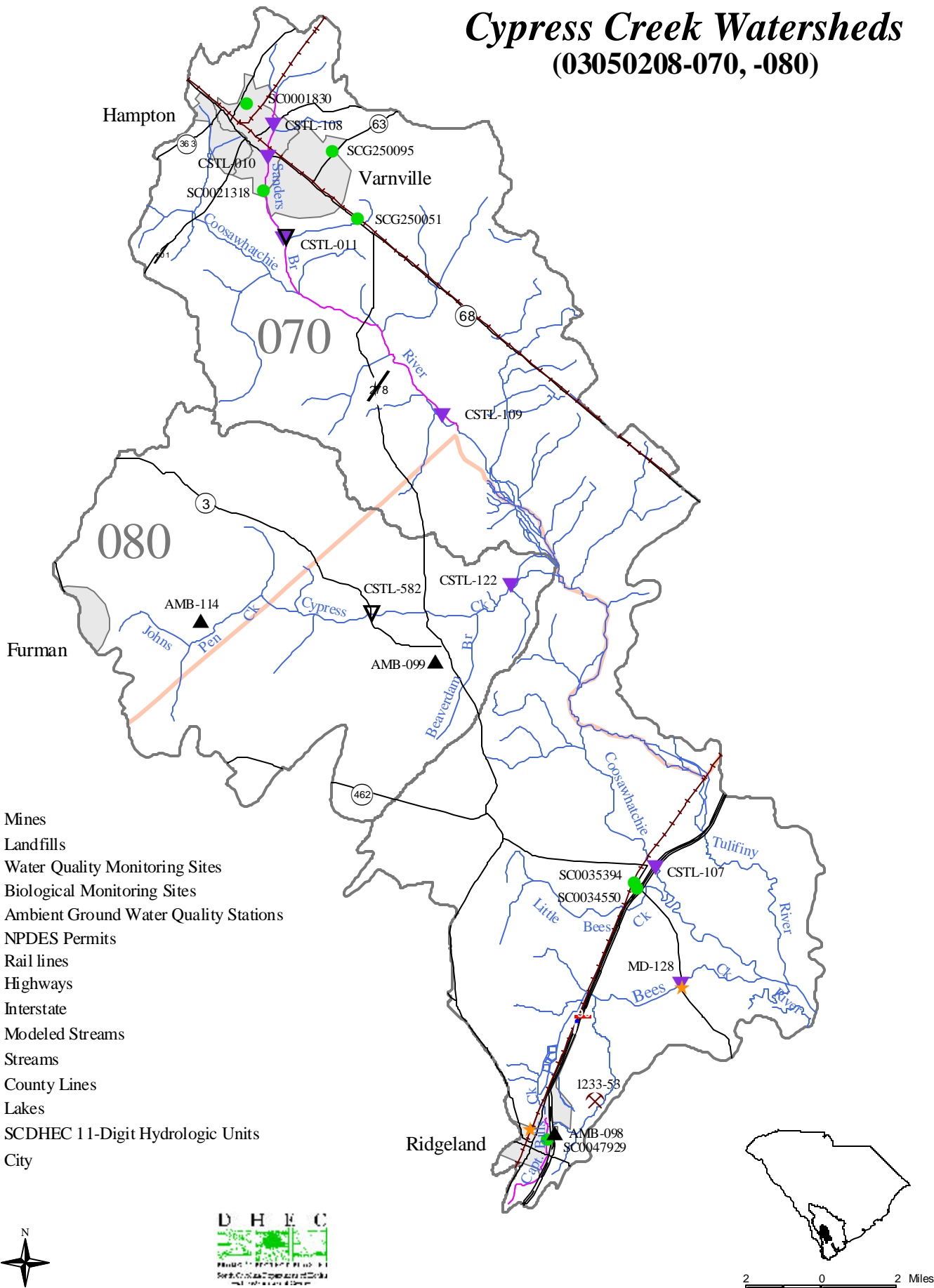
(03050208-050, -060)



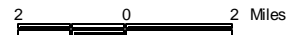
- Mines
- Landfills
- Water Quality Monitoring Sites
- Biological Monitoring Sites
- Ambient Ground Water Quality Stations
- Land Application Permits
- NPDES Permits
- Rail lines
- Highways
- Modeled Streams
- Streams
- County Lines
- Lakes
- SCDHEC 11-Digit Hydrologic Units
- City
- Public Lands



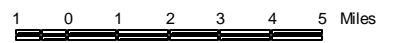
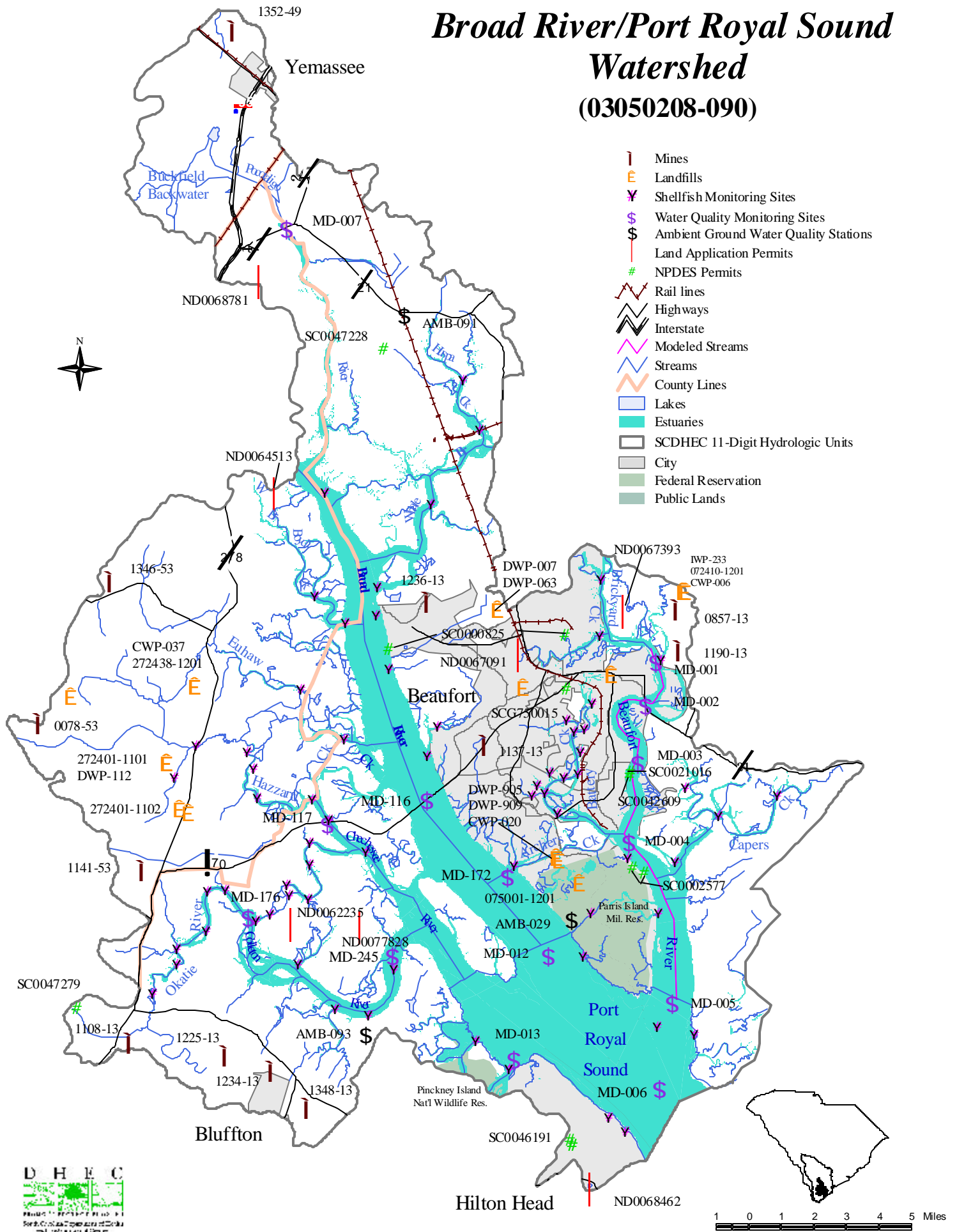
# Coosawhatchie River and Cypress Creek Watersheds (03050208-070, -080)



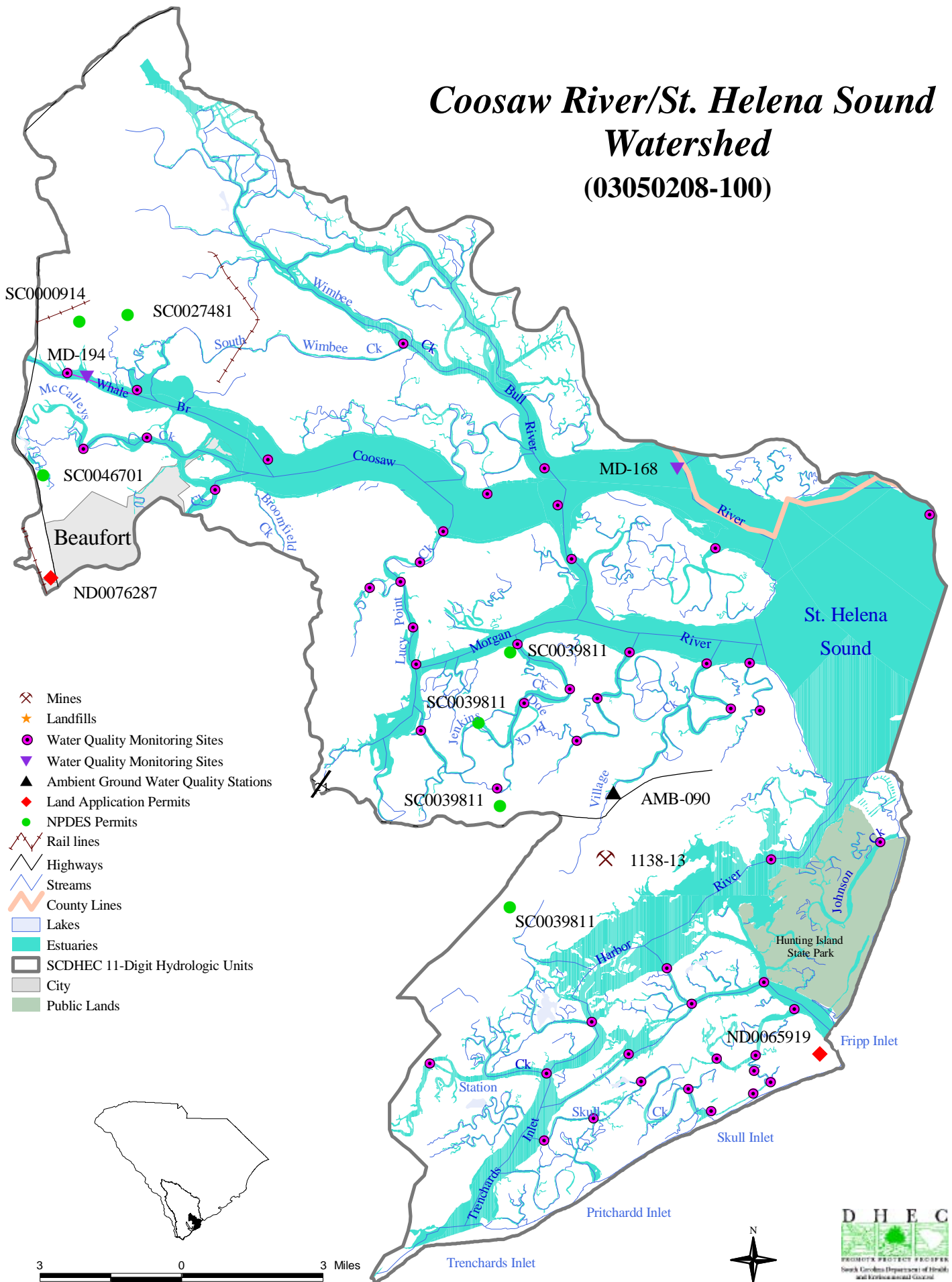
- Mines
- Landfills
- Water Quality Monitoring Sites
- Biological Monitoring Sites
- Ambient Ground Water Quality Stations
- NPDES Permits
- Rail lines
- Highways
- Interstate
- Modeled Streams
- Streams
- County Lines
- Lakes
- SCDHEC 11-Digit Hydrologic Units
- City



# Broad River/Port Royal Sound Watershed (03050208-090)

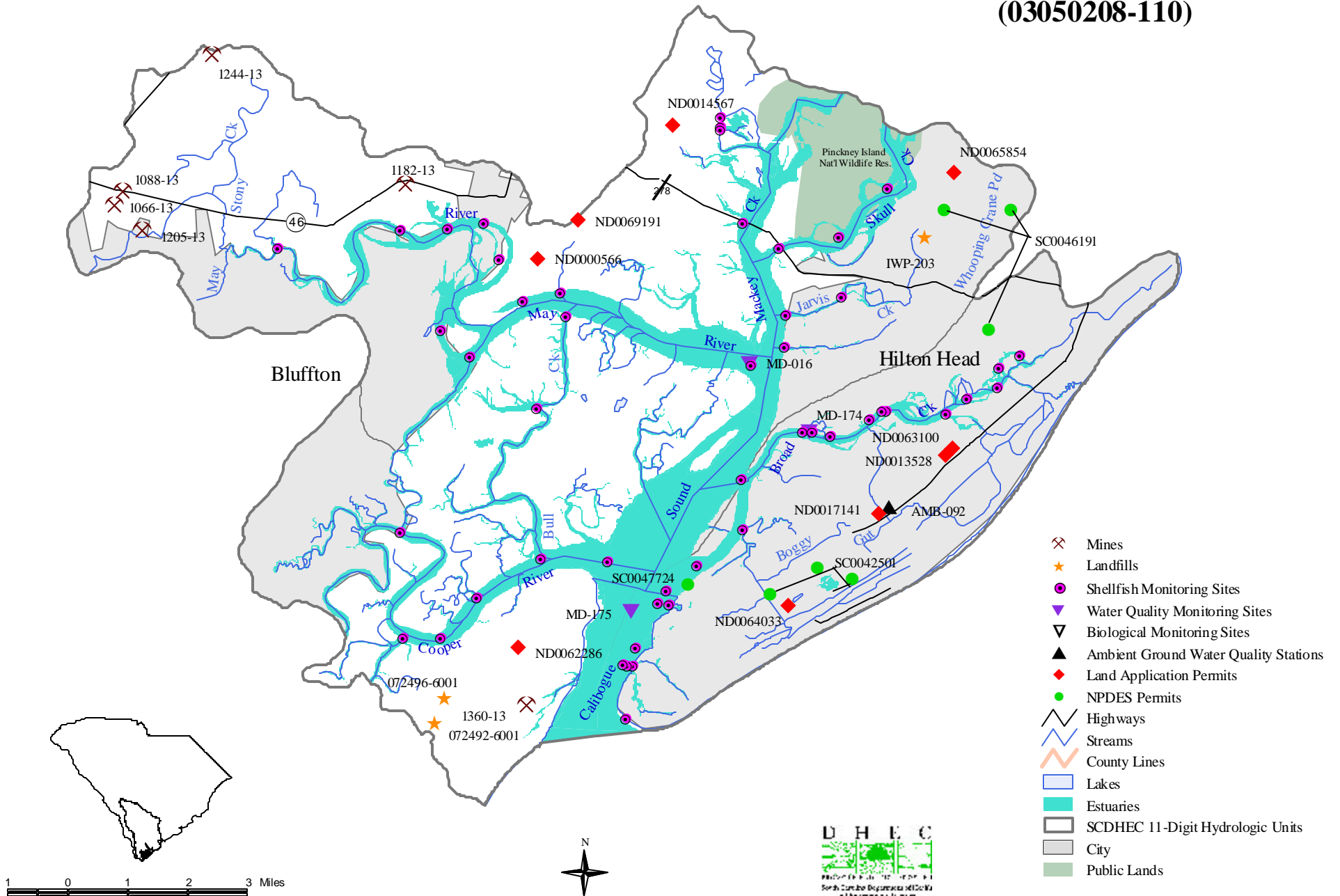


# Coosaw River/St. Helena Sound Watershed (03050208-100)

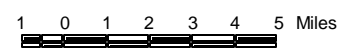
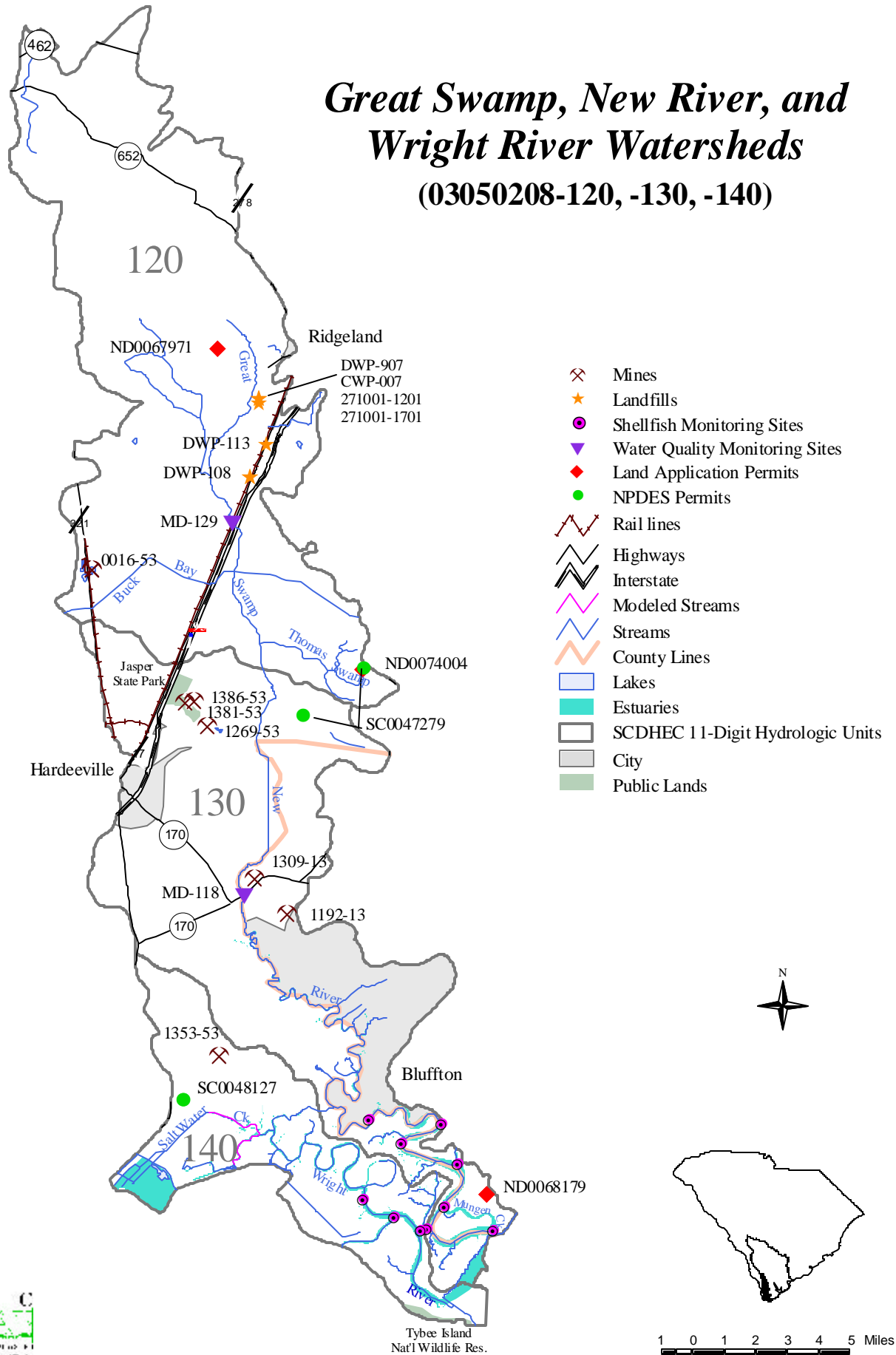


# May River/Calibougue Sound Watershed

(03050208-110)



# Great Swamp, New River, and Wright River Watersheds (03050208-120, -130, -140)



## Waterbody Index

Albergottie Creek .....	79, 84	Broad Water.....	97
Allen Creek.....	62	Broadway Branch .....	74
Alligator Bay .....	43	Brooker Pond.....	47
Archers Creek.....	79, 82	Broomfield Creek .....	79, 88
Ashepoo River.....	55, 58, 62, 67-69, 89, 120	Bryan Creek.....	92
Ashepoo-Coosaw Cut.....	59, 67	Bryans Lake.....	51
Ashton Branch.....	53	Buck Bay.....	97
Bagshaw Swamp.....	97	Buck Creek.....	36, 110
Bahama Swamp.....	97	Buckfield Backwater .....	74, 79
Ballast Creek .....	79, 82, 83	Buckhead Creek.....	33, 52, 110
Bank Creek.....	67	Bull Bay.....	51
Baptist Church Branch.....	65	Bull Creek.....	59, 92, 93
Barataria Creek.....	92	Bull Cut.....	67
Barnwell Creek.....	88	Bull River.....	88, 89
Bass Creek.....	88, 92	Calfpen Bay.....	97
Battery Creek.....	79, 80, 82, 84, 121	Calibogue Creek .....	92
Bay Swamp.....	74	Calibogue Sound.....	55, 79, 92-94, 99
Bear Branch.....	43	Calico Branch.....	45
Bear Creek.....	52	Callawassie Creek.....	79, 83
Beaufort River.....	55, 79-82, 84, 87, 88, 120, 121	Camp Branch.....	74
Beech Branch.....	70	Campbell Creek.....	88-90
Bees Creek.....	74, 75, 120	Cane Gall.....	78
Ben Rice Bay.....	47	Capers Creek.....	79, 82
Ben Rice Branch.....	47	Captain Bill's Creek.....	74, 76
Big Bay.....	62	Cat Island Creek.....	79, 82
Big Branch.....	43, 74	Causeway Swamp.....	97
Big Island Creek.....	79	Caw Caw Swamp.....	45
Big Pond.....	79	Cedar Branch.....	53, 70
Big Savannah Pond.....	92	Chechessee Creek.....	82, 83
Bings Branch.....	45	Chechessee River.....	55, 79, 80, 82, 83, 120
Bird Island Creek.....	79	Chehaw River.....	59
Birds Branch.....	41, 110	Chessey Creek.....	58, 65, 120
Black Creek.....	55, 59, 70, 72, 74, 120	Chitty Pond.....	41
Blood Hill Creek.....	70	Chowan Creek.....	79
Bluehouse Swamp.....	59, 62, 67, 120	Church Branch.....	43
Boatswain Pond Creek.....	88	Clear Pond.....	47
Bob Dam Swamp.....	99	Club Bridge Creek.....	88, 89
Boggy Gut.....	92, 94	Coffin Creek.....	88, 89
Bolen Pond.....	36	Coggin Creek.....	79
Boyd Creek.....	79, 82, 83	Coles Creek.....	79
Braddock Cove.....	92	Colleton River.....	79, 80, 81, 83, 87, 120
Branford Creek.....	88	Colston Branch.....	47
Briars Creek.....	88	Colt Branch.....	49
Brickyard Creek.....	79, 87, 88, 89	Combahee River... 33, 43, 54, 55, 58-60, 62, 88, 120,	
Brickyard Swamp.....	99	121	
Brier Creek.....	72	Cooper River.....	55, 92, 93, 99, 100, 121
Broad Creek.....	55, 92, 93, 121	Coosaw River.....	55, 60, 79, 88, 89, 121
Broad River.. .55, 56, 58, 74, 79, 80, 82-84, 87, 104,		Coosawhatchie River....55, 58, 70-72, 74-76, 78, 79,	
119, 120		82, 120	

Cowen Creek .....	79, 82	Harters Pond .....	70
Cowpen Branch .....	74	Haulover Creek.....	79
Crooked Creek.....	67	Hazzard Creek .....	79, 82, 83
Cuckolds Creek.....	59	Hercules Creek .....	41
Cypress Creek.....	55, 74, 78, 120	Hog Bay.....	49
Cypress Pond.....	43	Hog Branch.....	43, 45, 52
Darn Swamp .....	97	Hog Crawl Swamp.....	97
Deep Bottom Creek .....	52	Hole in the Wall.....	67
Deep Creek.....	54	Hoophole Creek.....	92
Deer Creek.....	67	Horse Pond .....	74
Distant Island Creek .....	79	Horse Swamp.....	99
Doctors Creek.....	62	Horsegall Creek.....	74
Doe Point Creek.....	88	Horsepen Bay .....	41
Doussoss Bay.....	47	Horseshoe Creek.....	55, 58, 65, 67, 120
Drawdy Branch.....	51	Horseshoe Lead Creek.....	65
Dry Branch .....	53	House Fork .....	74
Duck Branch.....	70	Hubert Pond.....	92
Duck Pond Creek.....	88	Hurricane Branch.....	51, 72
Early Branch.....	74	Hurricane Creek.....	41
East Branch Boyd Creek.....	79	Huspa Creek .....	79, 82, 84
Eddings Point Creek.....	88	Indian Camp Branch.....	47
Edisto River .....	67, 68, 104	Indian Creek .....	54
Factory Creek .....	79	Ireland Creek .....	62, 63, 120
Fender Creek.....	53	Jackson Branch.....	45, 110
Fenwick Cut.....	67	Jarvis Creek .....	92, 93
Fields Cut.....	102	Jefford Creek .....	67
Filly Branch .....	72	Jenkins Creek.....	88, 89
Fish Creek.....	67, 68, 89	Johno Creek .....	67
Fivemile Swamp .....	97	Johns Pen Creek.....	78
Folk Pond.....	36	Johnson Creek.....	88
Folly Creek .....	59	Jones Swamp Creek.....	62
Fosters Bay .....	52	Jordan Branch.....	41
Fourmile Swamp.....	99	Juniper Creek.....	41
Fox Pond.....	99	Kato Bay.....	97
Fripps Inlet.....	88	Kirkland Creek .....	43
Fuller Pond .....	41	Lake Cynthia.....	47
Fuller Swamp Creek.....	65, 120	Lake Edgar A. Brown.....	38
Garrett Lake.....	97	Lake George Warren.....	55, 72
Georges Creek .....	41	Lemon Creek .....	33, 47, 49, 51, 110
Ghants Branch.....	47	Levy Bay .....	70
Gillison Branch.....	97	Little Bees Creek .....	74, 76
Gin Branch.....	43	Little Clear Pond.....	47
Golden Bear Pond.....	92, 94	Little Duck Branch .....	70
Grapevine Branch.....	49	Little Salkehatchie River... 33, 35, 43, 47, 49, 51-55,	
Great Swamp .....	55, 62, 67, 97, 99, 121	59, 110	
Green Swamp .....	97	Little Savannah Pond.....	92
Gregory Pond.....	79	Little Swamp.....	51
Guess Pond .....	47	Log Branch.....	45
Habersham Creek.....	79, 83	Logging Savanna .....	65
Halfmoon Bay.....	97	Long Ashepool Creek .....	67
Halfmoon Branch.....	47, 49	Long Branch .....	38, 43, 47
Halfmoon Creek.....	88-90	Long Gall Branch .....	47
Harbor River.....	55, 88, 89	Long Pond .....	47

Lowndes Lake.....	74	Rosemary Creek .....	36, 110
Lucy Point Creek .....	88, 89	Rum Gully .....	53
Mackay Creek.....	79, 92	Salkehatchie River.....	33-36, 41-44, 47, 54, 59, 109- 111, 122
Maulding Millpond.....	45	Salt Creek .....	79
May River.....	55, 92, 93, 121	Salt Water Creek.....	102
McCalleys Creek .....	88-90	Sand Branch.....	97
McCuren Branch.....	53	Sanders Branch.....	74, 76, 120
McMillian Branch.....	47	Sandy Dam Branch.....	65
McPherson Creek .....	74	Sandy Hill Backwater.....	79
Meadow Branch.....	43	Sandy Run .....	45, 54, 110
Middle Pond .....	79	Savage Creek .....	92, 93
Mill Creek.....	74	Savannah Creek.....	43, 44, 110
Miller Swamp .....	45	Savannah River.....	37, 38, 50, 55, 96, 101, 102
Monkey John Swamp .....	102	Schooner Channel.....	88
Moon Creek .....	88	Scott Creek .....	88
Morgan Back Creek.....	88, 89	Sevenmile Swamp .....	97
Morgan River.....	55, 88, 89	Shereau Branch.....	65
Morse Island Creek.....	79	Shingle Swamp .....	97
Moselle Swamp .....	43	Shrub Branch .....	38
Mosquito Creek .....	67, 68	Sixmile Swamp.....	97
Mulligan Creek.....	79	Skull Creek .....	79-81, 83, 88-90, 92, 93, 121
Mungen Creek .....	99, 100	Skull Inlet .....	88, 90
Musselboro Creek.....	67	Snuggedy Swamp .....	67
New Chehaw River.....	59	Social Hall Creek.....	59
New River.....	55, 58, 92, 99, 100, 102	South Haulover Creek.....	79
Oats Hole .....	65	Station Creek .....	79, 82, 88, 89
Ocean Pond.....	43	Steedley Branch.....	52
Okatie River.....	79, 80, 83	Stony Creek .....	92
Old House Creek .....	88, 89, 92, 93	Story River.....	88, 89
Oldfield Creek .....	51	Swallow Savanna.....	70
Otter Creek .....	67	Switzerland Canal.....	97
Park Creek .....	79	Tennants Branch .....	43
Parker Branch .....	41	The Folly .....	92
Parrot Creek.....	88, 89	Thomas Swamp .....	97
Pen Branch.....	41	Threemile Creek .....	43
Perry Creek.....	62	Toby Creek .....	41, 110
Pickseed Swamp.....	99	Tony Hill Bay .....	49
Pigeon Point Creek.....	79	Trenchards Inlet.....	88, 89
Pine Island Creek.....	67, 68, 88	Trowells Mill Branch.....	72
Point Comfort Creek.....	92	True Blue Creek.....	88
Poli Bay .....	97	Tulifiny River .....	74
Port Royal Sound.....	55, 79, 82, 83, 92	Turkey Creek .....	33, 36, 38-41, 110
Pretty Creek .....	43	Turkey Pond .....	99
Pringle Creek .....	65	Turtle Creek.....	88
Ramshorn Creek .....	92, 93, 99, 100	Tutens Millpond .....	45
Remick Swamp.....	62	Two Bridge Swamp .....	99
Ribbon Creek.....	79	Two Sisters Creek.....	67
Ricepatch Creek.....	43	Village Creek.....	88, 89
Riley Mill Branch .....	41	Wagon Branch .....	97
River Pond.....	79	Wallace Creek .....	79
Rock Creek.....	67	Ward Creek.....	88
Rock Spring Creek.....	88	Warrens Savanna .....	65
Rose Dew Creek .....	92		

Watts Cut .....	99, 100, 102
Wells Branch .....	41, 43
West Branch Boyd Creek .....	79
Whale Branch .....	79, 82, 83, 88, 89, 121
Whig Swamp .....	79
Whippy Swamp .....	33, 43, 45, 110
White Hall Pond .....	79
Whooping Crane Pond.....	94
Williman Creek.....	88
Willow Swamp .....	33, 51, 53, 54, 110
Wimbee Creek .....	88
Wright River .....	55, 99, 102
Zigzag Branch.....	78